

Shelf Manager – VT011

Shelf Manager



KEY FEATURES

- Shelf manager for AdvancedTCA systems
- Utilizing VadaTech Third Generation Shelf Manager VT003
- Option to plug into ATC139 AdvancedTCA Carrier
- Quad Core ARM Freescale processor @ 1 GHz per core
- One GB DDR3 memory
- FRAM for log messages
- 32GB of Flash
- 8GB of NAND Flash
- Quad 10/100 Ethernet ports
- I2C Real Time Clock with battery backup
- IPMI 2.0 compliant

Benefits of Choosing VadaTech

- Shelf managers in various sizes and formats
- Mezzanine approach of VT003 ShMM allows re-use in multiple designs and applications
- Proven design used on other VadaTech ATCA products
- Electrical, mechanical, software, and system-level expertise in house
- Full ecosystem of front and rear boards, enclosures, specialty modules, and test/dev products from one source
- AS9100 and ISO9001 certified company

The VT011 is a VadaTech Shelf Manager for AdvancedTCA systems. The VT011 provides Telco Alarm via Micro DB-15 on its front panel as well as indication for Minor/Major/Critical alarm indication. The board can also run as a protocol analyzer to monitor, inject, capture and validate I2C traffic on the Intelligent Platform Management Bus (IPMB) on all of the I2C busses.

A Graphical User Interface (GUI) validates and displays the IPMI packets or schedules IPMI messages for injection into the shelf. The GUI application communicates with the VT011 through the Ethernet port. Each IPMI bus has a 64-byte FIFO to allow for a full IPMI packet on each I2C bus so there is no packet loss during operation. When two VT011s are in the system, they operate in redundant active/standby mode. During operation, one VT011 is active while the second one is synchronized in hot standby mode. The module is fully hot-swappable to minimize service down time.

KEY SOFTWARE FEATURES

IPMI VERSION 2.0

- FRU inventory access and update
- Device SDR repository access and update
- Initialization agent
- Temperature sensors
- Settable / readable sensor thresholds and hysteresis
- Sensor event generation
- Basic mode serial messaging (Payload interface)
- Warm reset
- Cold reset
- Get self-test results

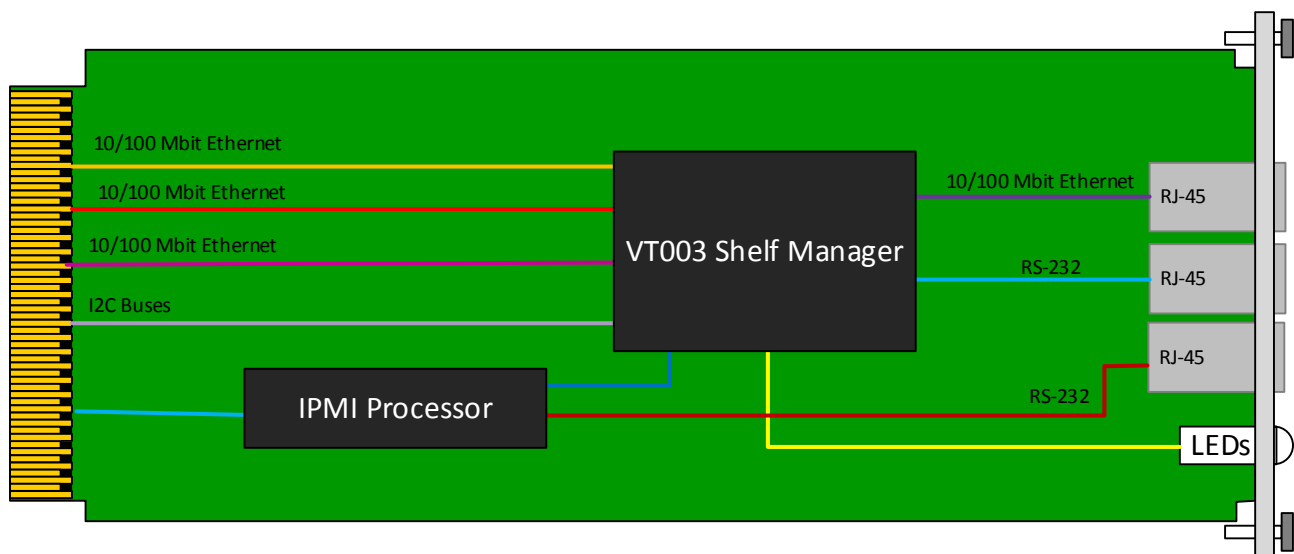
PICMG ATCA VERSION 3.X

- IPMB-0
- IPMB sensors
- IPMB sensor event generation
- ATCA electronic keying
- Hot swap sensor
- Hot swap event generation
- FRU control
- LED controls

INTEGRATION SERVICES AND APPLICATION-READY PLATFORMS

VadaTech has a full ecosystem of ATCA and μ TCA products including chassis platforms, shelf managers, AMC modules, Switch and Payload Boards, Rear Transition Modules (RTM), Power Modules, and more. The company also offers integration services as well as pre-configured Application-Ready Platforms. Please contact VadaTech Sales for more information.

BLOCK DIAGRAM



SPECIFICATIONS

Architecture		
Physical	Dimensions	Width: 5.85 in. (148.5 mm)
		Depth: 7.11 in. (180.6 mm)
Type	Shelf Manager	AdvancedTCA systems Shelf Manager
Standards		
Module Management	IPMI	IPMI v2.0
PICMG		3.x
Configuration		
Power	VT011	~5 W
Environmental	Temperature	Operating Temperature: 0° to 85° C
		Storage Temperature: –40° to +125° C
	Vibration	1G, 5 to 500 Hz on each axis
	Shock	30Gs on each axis
	Relative Humidity	5 to 95 percent, non-condensing
Front Panel	Interface Connectors	RS-232 via RJ-45
		10/100 Ethernet RJ-45
	LEDs	IPMI management control
		Activity/Link LEDs, User defined LEDs
	Push Button	Reset Switch
Software Support	Mechanical	Hot-swap ejector handle
	Operating Systems	Linux
Other		
MTFB	MIL Hand book 217-F @ 242,000 Hrs	
Certifications	Designed to meet FCC, CE and UL certifications where applicable	
Standards	VadaTech is certified to both the ISO9001:2000 and AS9100B:2004 standards	
Compliance	RoHS and NEBS	
Warranty	Two (2) years	
Trademarks and Disclaimer	The VadaTech logo is a registered trademark of VadaTech, Inc. Other registered trademarks are the property of their respective owners. AdvancedTCA™ and the AdvancedMC™ logo are trademarks of the PCI Industrial Computers Manufacturers Group. All rights reserved. Specification subject to change without notice	

ORDERING OPTIONS

VT011 – 000 – 000 – 0HJ

H = Temperature Range

1 = Commercial (–5° to +55° C)

2 = Industrial (–20° to +70° C)

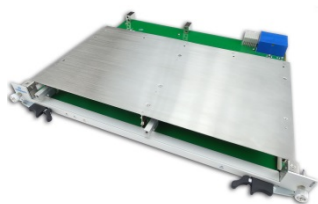
J = Conformal Coating

0 = None

1 = Humiseal 1A33 Polyurethane

2 = Humiseal 1B31 Acrylic

RELATED PRODUCTS



ATC139 ATCA
Carrier for VT011



EXP200 Express
Chassis Platform



ATC114 ATCA
Carrier for AMCs

CONTACT US

VadaTech Corporate Office

198 N. Gibson Rd,
Henderson, NV 89014
Email: info@vadatech.com
Telephone: +1 702 896-3337
Fax: +1 702 896-0332

Asia Pacific Sales Office

7 Floor, No. 2, Wenhui Street, Neihu District,
Taipei 114, Taiwan
Email: info@vadatech.com
Telephone: +886-2-2627-7655
Fax: +886-2-2627-7792

VadaTech European Sales Office

Ocean Village Innovation Centre, Ocean Way,
Ocean Village, Southampton, SO14 3JZ
Email: info@vadatech.com
Telephone: +44 2380 381982
Fax: +44 2380 381983